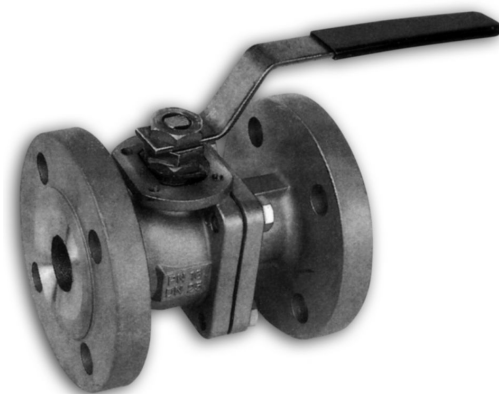
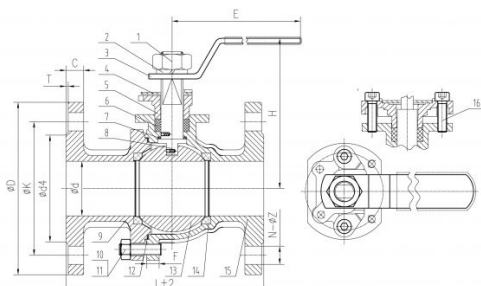


2-PC BALL VALVE, FLANGED, FULL BORE

Position	Description	Material
1.	Nut	304
2.	Spring Washer	304
3.	Handle	201
4.	Orientation Patch	304
5.	Gland	CF8M
6.	Packing	PTFE
7.	Thrust Gasket	PTFE
8.	Stem	316
9.	Cap	CF8M
10.	Nut	304
11.	Bolt	304
12.	Thrust Gasket	PTFE
13.	Ball	316
14.	Seat	PTFE
15.	Body	CF8M
16.	Hex Screws	304



PN16 - Tabulka základních rozměrů



DN	d	d4	K	D	T	C	N - Z	L	H	E	F	Hmotnost
15	15	45	65	95	2	16	4-14	115	74	120	8	
20	20	58	75	105	2	18	4-14	120	79	120	8,5	
25	25	68	85	115	2	18	4-14	125	88	145	9,5	
32	32	78	100	140	2	18	4-18	130	100	145	10	
40	38	88	110	150	3	18	4-18	140	113	160	11	
50	49	102	125	165	3	18	4-18	150	121	170	12	
65	65	122	145	185	3	18	4-18	170	134	230	12	
80	80	138	160	200	3	20	8-18	180	141	260	12,5	
100	100	158	180	220	3	20	8-18	190	153	300	13	
125	125	188	210	250	3	22	8-18	325		600		
150	150	188	210	250	3	22	8-22	325		800		
200	200	268	295	340	3	24	12-22	400		1000		

PN 40 - Tabulka základních rozměrů

2-PC BALL VALVE, FLANGED, FULL BORE

DN	d	d4	K	D	T	C	N - Z	L	H	E	F	Hmotnost
15	15	45	65	95	2	16	4-14	115	74	120	8	
20	20	58	75	105	2	18	4-14	120	79	120	8,5	
25	25	68	85	115	2	18	4-14	125	88	145	9,5	
32	32	78	100	140	2	18	4-18	130	100	145	10	
40	38	88	110	150	3	18	4-18	140	113	160	11	
50	49	102	125	165	3	20	4-18	150	121	170	12	
65	65	122	145	185	3	22	8-18	170	134	230	12	
80	80	138	160	200	3	24	8-18	180	141	260	12,5	
100	100	162	190	235	3	24	8-22	190	153	300	13	