

L10 117 516/540

DN 40 ÷ DN 100/ PN 40

DN 125 ÷ DN 500/ PN 16

SWING CHECK VALVE



- cast body and bonnet
- full bore
- sealing surfaces welded on body and disc
- automatic operating

APPLICATION:

- cold or hot water distribution
- petrochemical or chemical industry

ADVANTAGES:

- low pressure loss
- easy installation and maintenance
- long service life



TECHNICAL DATA:

Working range: water, steam, gas and another non-aggressive working fluids
in temperature range: -29 °C to +400 °C

The allowable pressure/temperature rating: EN 12516-1:2014

Face to face: from DN 40 to DN 100 EN 588-1, serie 1
from DN 125 to DN 500 according to manufacturer

Flanges: EN 1092-1, B1

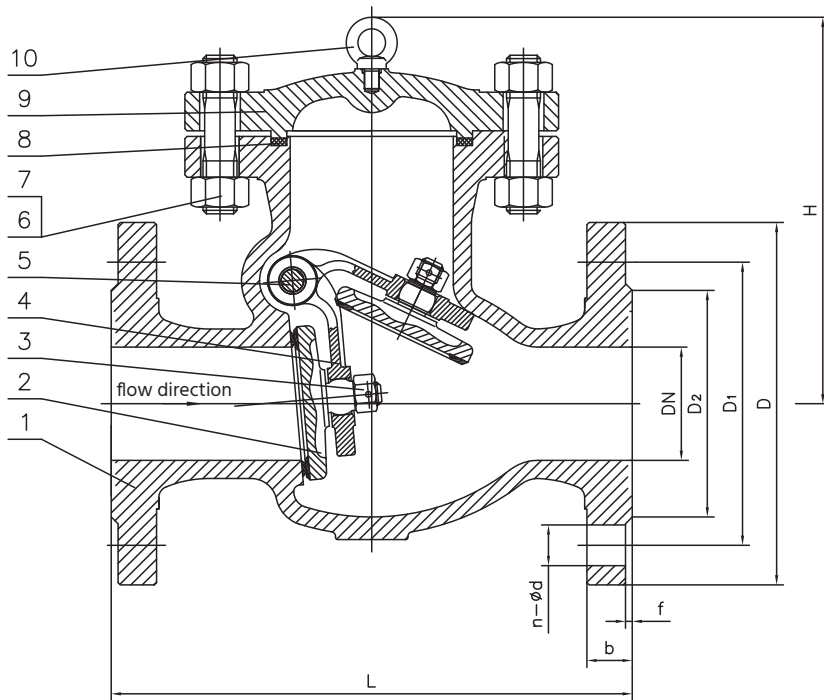
The swing check valve prevents backflow of the working fluid; it is not a shut-off valve. If tightness is required, it is necessary to include a shut-off valve in the pipeline.

The swing check valve can be installed in horizontal or vertical piping. In a horizontal pipe, the swing check valve must be installed with the bonnet up. In the vertical piping it is necessary that the direction of flow is the same as the direction of the arrow on the valve body (disc up).

Options: with counterweight
with bypass
with counterweight and bypass
other types of coatings according to customer requirements
delivery including counter-flanges, bolting and sealing material

Testing: each valve is tested according to EN 12266 and supplied with
accompanying documentation according to EN 10204

DESIGN AND CONSTRUCTION MATERIALS



Hinge pin end detail

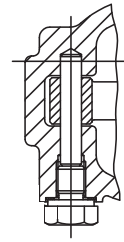


Table 1 Materials of main parts

Pos.	Description	Material
1	Body ¹⁾	GP240GH+13Cr
2	Disc	GP240GH+13Cr
3	Nut of disc	ASTM A194 2H
4	Hinge of disc	GP240GH
5	Hinge pin	ASTM A182 F6a
6	Bolt of bonnet	ASTM A193 B7
7	Nut of bonnet	ASTM A194 2H
8	Sealing	Grafit+AISI304
9	Bonnet ¹⁾	GP240GH
10	Handling eye	ASTM A194 2H

¹⁾ with epoxy paint 100 -150 µm, RAL 5002

DIMENSIONS

Dimensions (mm)										Weight
DN	PN	D	D1	D2	b	f	n-ød	L	H	kg
40	40	150	110	88	18	3	4-ø18	200	129	12
50	40	165	125	102	20	3	4-ø18	230	152	14,5
65	40	185	145	122	22	3	4-ø18	290	178	21,5
80	40	200	160	138	24	3	8-ø18	310	185	29,5
100	40	235	190	162	24	3	8-ø22	350	210	39,5
125	16	250	210	188	22	3	8-ø18	400	265	50,5
150	16	285	240	212	22	3	8-ø22	460	285	70
200	16	340	295	268	24	3	12-ø22	500	332	103,5
250	16	405	355	320	26	3	12-ø26	600	395	157
300	16	460	410	378	28	4	12-ø26	700	420	212
350	16	520	470	438	30	4	16-ø26	800	460	339
400	16	580	525	490	32	4	16-ø30	900	522	447
450	16	640	585	550	34	4	20-ø30	1000	572	583
500	16	715	650	610	36	4	20-ø33	1100	622	812

The data in this datasheet are informative only and the manufacturer reserves the right to changes of technical details.