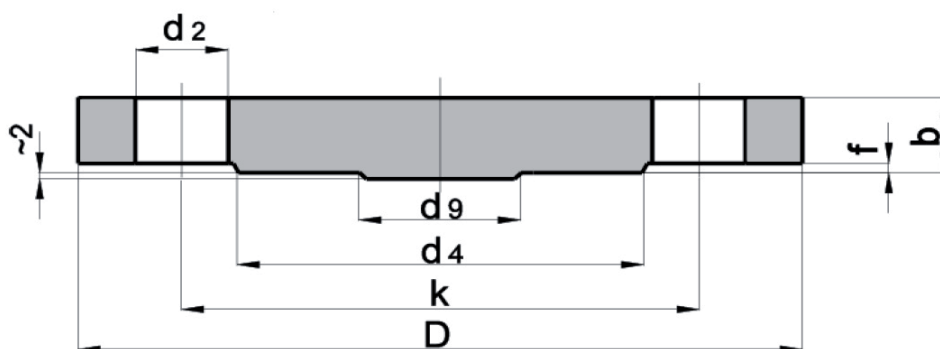


# PŘÍRUBY ZASLEPOVACÍ EN 1092-1

TYP 05, B1, DN 15–DN 600 / PN 16



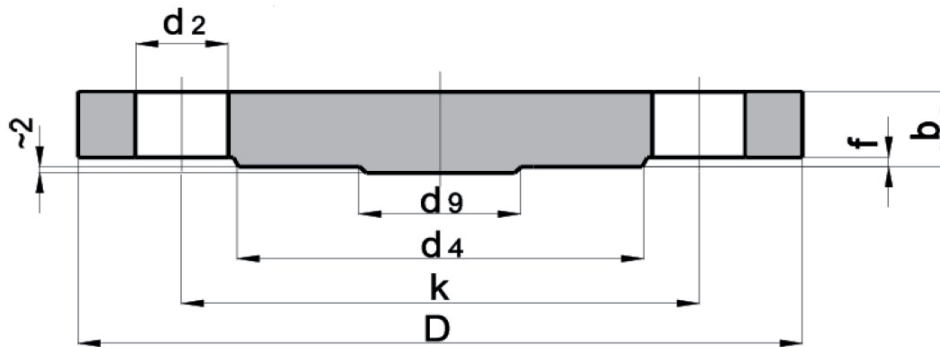
Materiál: P245GH

| DN  | průměr trubky | D   | b  | k   | d <sub>4</sub> | f | d <sub>9</sub> | počet otvorů pro šrouby | d <sub>2</sub> | kg   |
|-----|---------------|-----|----|-----|----------------|---|----------------|-------------------------|----------------|------|
| 15  | 21,3          | 95  | 16 | 65  | 45             | 2 | .              | 4                       | 14             | 0,81 |
| 20  | 26,9          | 105 | 18 | 75  | 58             | 2 | .              | 4                       | 14             | 1,14 |
| 25  | 33,7          | 115 | 18 | 85  | 68             | 2 | .              | 4                       | 14             | 1,38 |
| 32  | 42,4          | 140 | 18 | 100 | 78             | 2 | .              | 4                       | 18             | 2,03 |
| 40  | 48,3          | 150 | 18 | 110 | 88             | 3 | .              | 4                       | 18             | 2,35 |
| 50  | 60,3          | 165 | 18 | 125 | 102            | 3 | .              | 4                       | 18             | 2,88 |
| 65  | 76,1          | 185 | 18 | 145 | 122            | 3 | 55             | 8*                      | 18             | 3,51 |
| 80  | 88,9          | 200 | 20 | 160 | 138            | 3 | 70             | 8                       | 18             | 4,61 |
| 100 | 114,3         | 220 | 20 | 180 | 158            | 3 | 90             | 8                       | 18             | 5,65 |
| 125 | 139,7         | 250 | 22 | 210 | 188            | 3 | 115            | 8                       | 18             | 8,13 |
| 150 | 168,3         | 285 | 22 | 240 | 212            | 3 | 140            | 8                       | 22             | 10,5 |
| 200 | 219,1         | 340 | 24 | 295 | 268            | 3 | 190            | 12                      | 22             | 16,2 |
| 250 | 273           | 405 | 26 | 355 | 320            | 3 | 235            | 12                      | 26             | 25   |
| 300 | 323,9         | 460 | 28 | 410 | 378            | 4 | 285            | 12                      | 26             | 35,1 |
| 350 | 355,6         | 520 | 30 | 470 | 438            | 4 | 330            | 16                      | 26             | 48   |
| 400 | 406,4         | 580 | 32 | 525 | 490            | 4 | 380            | 16                      | 30             | 63,5 |
| 450 | 457           | 640 | 40 | 585 | 550            | 4 | 425            | 20                      | 30             | 96,6 |
| 500 | 508           | 715 | 44 | 650 | 610            | 4 | 475            | 20                      | 33             | 133  |
| 600 | 610           | 840 | 54 | 770 | 725            | 5 | 575            | 20                      | 36             | 226  |

Poznámka: \* u DN65 mohou být dle požadavku odběratele 4 otvory pro šrouby

# BLIND FLANGES EN 1092-1

TYPE 05, B1, DN 15–DN 600 / PN 16



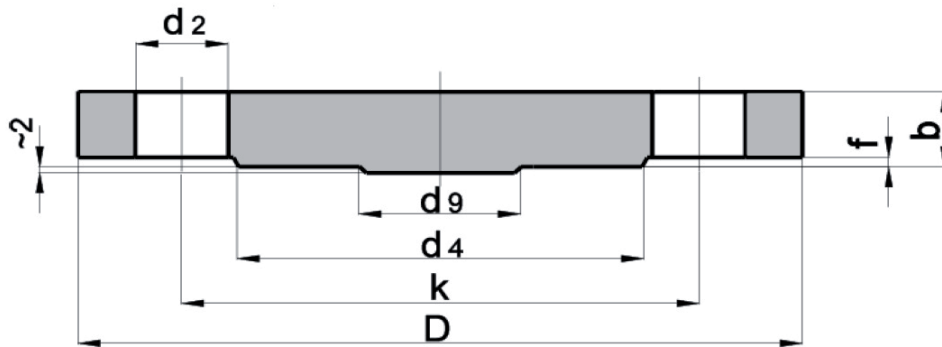
Material: P245GH

| DN  | diameter of tube | D   | b  | k   | $d_4$ | f | $d_9$ | number of bolt holes | $d_2$ | kg   |
|-----|------------------|-----|----|-----|-------|---|-------|----------------------|-------|------|
| 15  | 21,3             | 95  | 16 | 65  | 45    | 2 | .     | 4                    | 14    | 0,81 |
| 20  | 26,9             | 105 | 18 | 75  | 58    | 2 | .     | 4                    | 14    | 1,14 |
| 25  | 33,7             | 115 | 18 | 85  | 68    | 2 | .     | 4                    | 14    | 1,38 |
| 32  | 42,4             | 140 | 18 | 100 | 78    | 2 | .     | 4                    | 18    | 2,03 |
| 40  | 48,3             | 150 | 18 | 110 | 88    | 3 | .     | 4                    | 18    | 2,35 |
| 50  | 60,3             | 165 | 18 | 125 | 102   | 3 | .     | 4                    | 18    | 2,88 |
| 65  | 76,1             | 185 | 18 | 145 | 122   | 3 | 55    | 8*                   | 18    | 3,51 |
| 80  | 88,9             | 200 | 20 | 160 | 138   | 3 | 70    | 8                    | 18    | 4,61 |
| 100 | 114,3            | 220 | 20 | 180 | 158   | 3 | 90    | 8                    | 18    | 5,65 |
| 125 | 139,7            | 250 | 22 | 210 | 188   | 3 | 115   | 8                    | 18    | 8,13 |
| 150 | 168,3            | 285 | 22 | 240 | 212   | 3 | 140   | 8                    | 22    | 10,5 |
| 200 | 219,1            | 340 | 24 | 295 | 268   | 3 | 190   | 12                   | 22    | 16,2 |
| 250 | 273              | 405 | 26 | 355 | 320   | 3 | 235   | 12                   | 26    | 25   |
| 300 | 323,9            | 460 | 28 | 410 | 378   | 4 | 285   | 12                   | 26    | 35,1 |
| 350 | 355,6            | 520 | 30 | 470 | 438   | 4 | 330   | 16                   | 26    | 48   |
| 400 | 406,4            | 580 | 32 | 525 | 490   | 4 | 380   | 16                   | 30    | 63,5 |
| 450 | 457              | 640 | 40 | 585 | 550   | 4 | 425   | 20                   | 30    | 96,6 |
| 500 | 508              | 715 | 44 | 650 | 610   | 4 | 475   | 20                   | 33    | 133  |
| 600 | 610              | 840 | 54 | 770 | 725   | 5 | 575   | 20                   | 36    | 226  |

Note: \* for DN65, 4 screw holes can be provided on customer request

# ГЛУХИЕ ФЛАНЦЫ EN 1092-1

ТИП 05, В1, DN 15–DN 600 / PN 16



Материал: P245GH

| DN  | диаметр трубы | D   | b  | k   | d <sub>4</sub> | f | d <sub>9</sub> | количество отверстий под болты | d <sub>2</sub> | kg   |
|-----|---------------|-----|----|-----|----------------|---|----------------|--------------------------------|----------------|------|
| 15  | 21,3          | 95  | 16 | 65  | 45             | 2 | .              | 4                              | 14             | 0,81 |
| 20  | 26,9          | 105 | 18 | 75  | 58             | 2 | .              | 4                              | 14             | 1,14 |
| 25  | 33,7          | 115 | 18 | 85  | 68             | 2 | .              | 4                              | 14             | 1,38 |
| 32  | 42,4          | 140 | 18 | 100 | 78             | 2 | .              | 4                              | 18             | 2,03 |
| 40  | 48,3          | 150 | 18 | 110 | 88             | 3 | .              | 4                              | 18             | 2,35 |
| 50  | 60,3          | 165 | 18 | 125 | 102            | 3 | .              | 4                              | 18             | 2,88 |
| 65  | 76,1          | 185 | 18 | 145 | 122            | 3 | 55             | 8*                             | 18             | 3,51 |
| 80  | 88,9          | 200 | 20 | 160 | 138            | 3 | 70             | 8                              | 18             | 4,61 |
| 100 | 114,3         | 220 | 20 | 180 | 158            | 3 | 90             | 8                              | 18             | 5,65 |
| 125 | 139,7         | 250 | 22 | 210 | 188            | 3 | 115            | 8                              | 18             | 8,13 |
| 150 | 168,3         | 285 | 22 | 240 | 212            | 3 | 140            | 8                              | 22             | 10,5 |
| 200 | 219,1         | 340 | 24 | 295 | 268            | 3 | 190            | 12                             | 22             | 16,2 |
| 250 | 273           | 405 | 26 | 355 | 320            | 3 | 235            | 12                             | 26             | 25   |
| 300 | 323,9         | 460 | 28 | 410 | 378            | 4 | 285            | 12                             | 26             | 35,1 |
| 350 | 355,6         | 520 | 30 | 470 | 438            | 4 | 330            | 16                             | 26             | 48   |
| 400 | 406,4         | 580 | 32 | 525 | 490            | 4 | 380            | 16                             | 30             | 63,5 |
| 450 | 457           | 640 | 40 | 585 | 550            | 4 | 425            | 20                             | 30             | 96,6 |
| 500 | 508           | 715 | 44 | 650 | 610            | 4 | 475            | 20                             | 33             | 133  |
| 600 | 610           | 840 | 54 | 770 | 725            | 5 | 575            | 20                             | 36             | 226  |

Note: \* for DN65, 4 screw holes can be provided on customer request