



- design EN 13709
- straight cast body
- AISI 316 disc + AISI 316 welded seat surface
- rising stem with outside screw and yoke
- asbestos-free packing

#### APPLICATION

- water or steam distribution
- cooling systems
- petrochemical or chemical industry

#### ADVANTAGES

- compliance of emission standards
- easy installation and maintenance
- long service life



#### TECHNICAL DATA

Working range: water, steam, natural gas, oil, petroleum derivatives and another non-aggressive working fluids; temperature range from -50 °C to +500 °C

The allowable pressure/temperature rating:

Nom. pressure	Material	Max. working pressure (bar) – Temperature (°C)								
		100 °C	150 °C	200 °C	250 °C	300 °C	350 °C	400 °C	450 °C	500 °C
PN 40	1.4408	40,0	36,3	33,7	31,8	29,7	28,5	27,4	26,9	26,4

Construction materials: stainless steel (pls see more in table of materials of main parts)

Face to face: EN 558-1, serie 1

Flanges: EN 1092-1, B1/ DIN PN40

Straight globe valves have a flow direction of the working fluid equal to the direction of the arrow on the body and are designed to operate in the OPEN or CLOSED position. They are not suitable for flow control in the basic version.

Operating: hand wheel

Options: hand wheel with lock  
hand wheel with limit switches  
operating by electric actuator  
other types of coatings according to customer requirements  
delivery including counter-flanges, bolting and sealing material

Testing: each globe valve is tested according to EN 12266 and supplied with accompanying documentation according to EN 10204

Certification: PED 2014/68/ EU

DESIGN AND CONSTRUCTION MATERIALS

Fig.1 DN 15 – DN 50

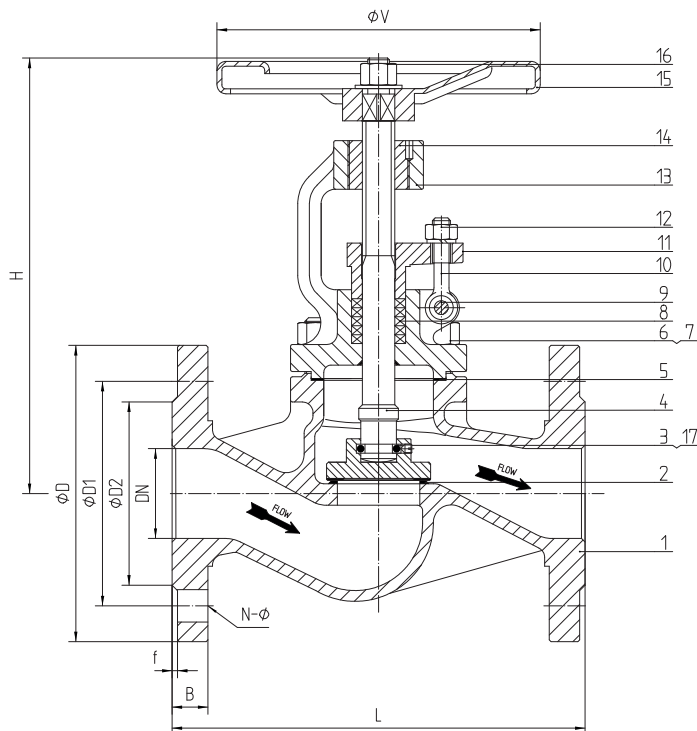


Fig.2 DN 65 – DN 100

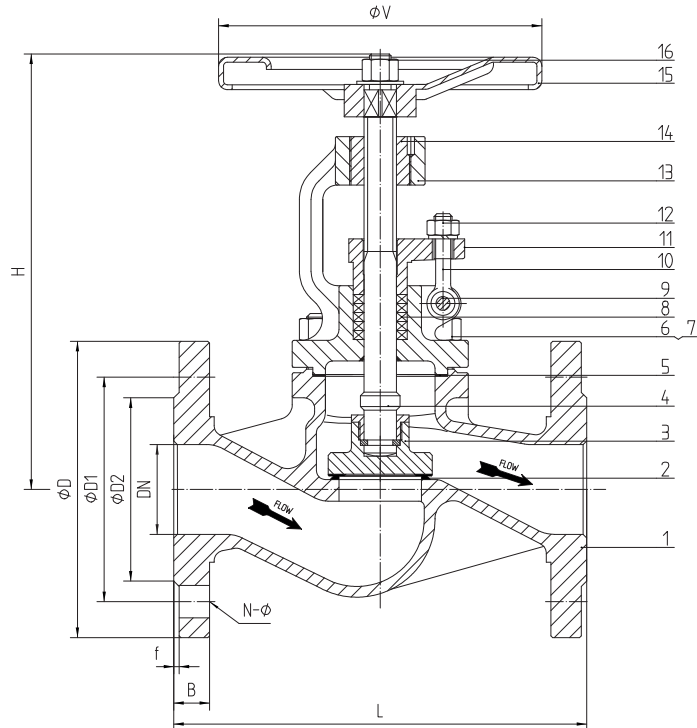


Table 1 Materials of main parts

Pos.	Name of part	Material	Pos.	Name of part	Material
1	Body	1.4408	10	Eye bolt	ASTM A320 B8
2	Seat	X2013Cr	11	Gland	1.4308
3	Disc	AISI316	12	Nut	ASTM A194 8
4	Stem	AISI316	13	Bonnet	1.4408
5	Gasket	AISI316 + graphite	14	Stem nut	Cu-Alloy
6	Nut	ASTM A194 8	15	Hand wheel	Steel
7	Bolt	ASTM A320 B8	16	Lock nut	Stainless Steel
8	Packing	Graphite	17	Bearing of disc <sup>1)</sup>	AISI316
9	Pin	AISI301			

1) DN 15 – DN 50

GENERAL DIMENSIONS (mm)

DN	PN	L	D	D1	D2	B	f	N-Ø	H	Zdvih	ØV
15	40	130	95	65	45	16	2	4x14	190	10	140
20		150	105	75	58	18	2	4x14	197	12	140
25		160	115	85	68	18	2	4x14	217	16	160
32		180	140	100	78	18	2	4x18	218	18	160
40		200	150	110	88	18	3	4x18	252	20	180
50		230	165	125	102	20	3	4x18	259	22	180
65		290	185	145	122	22	3	8x18	294	24	200
80		310	200	160	138	24	3	8x18	332	29	250
100		350	235	190	162	24	3	8x22	359	34	300

*The data in this catalogue sheet are for information only and the manufacturer reserves the right to make technical changes.*